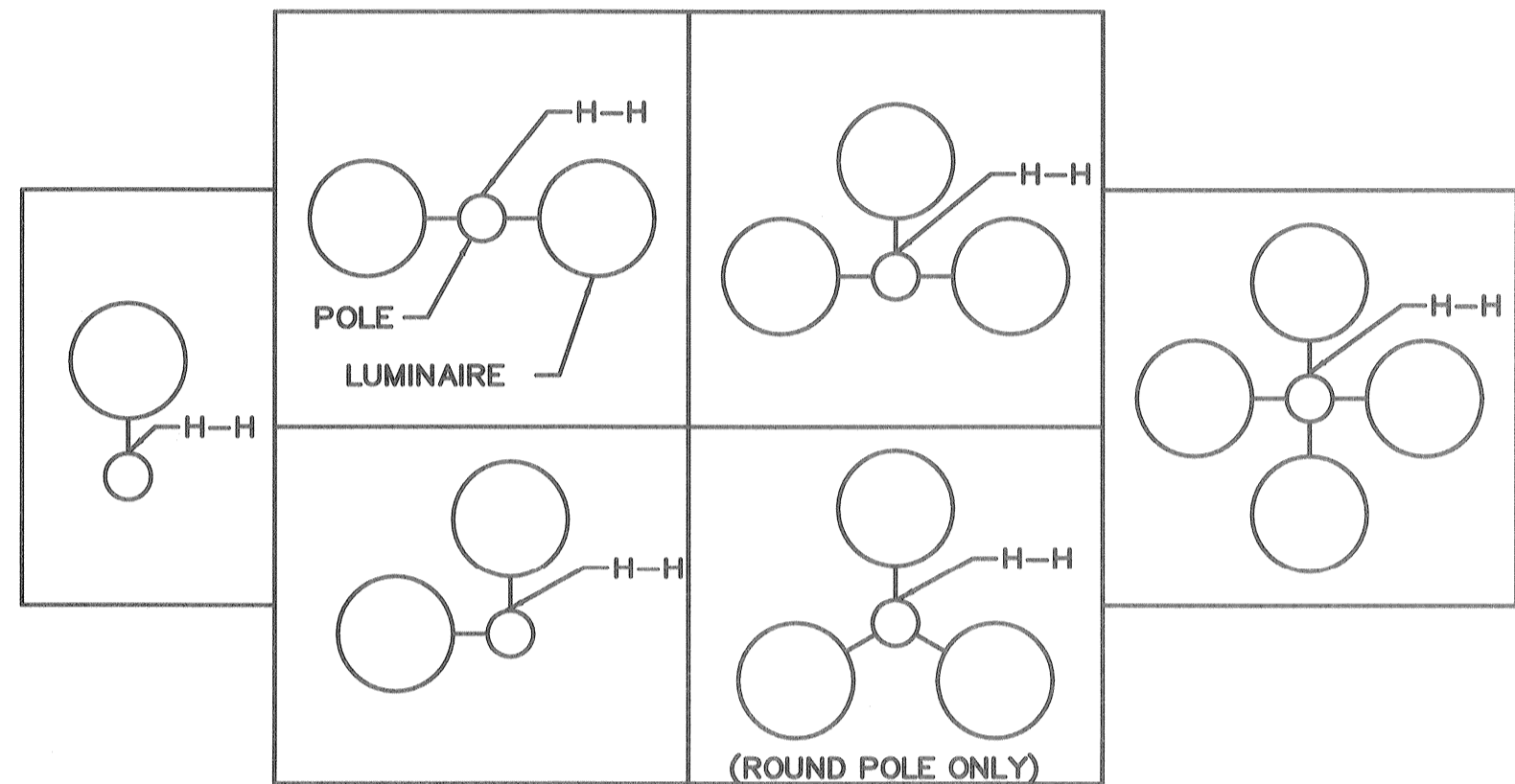


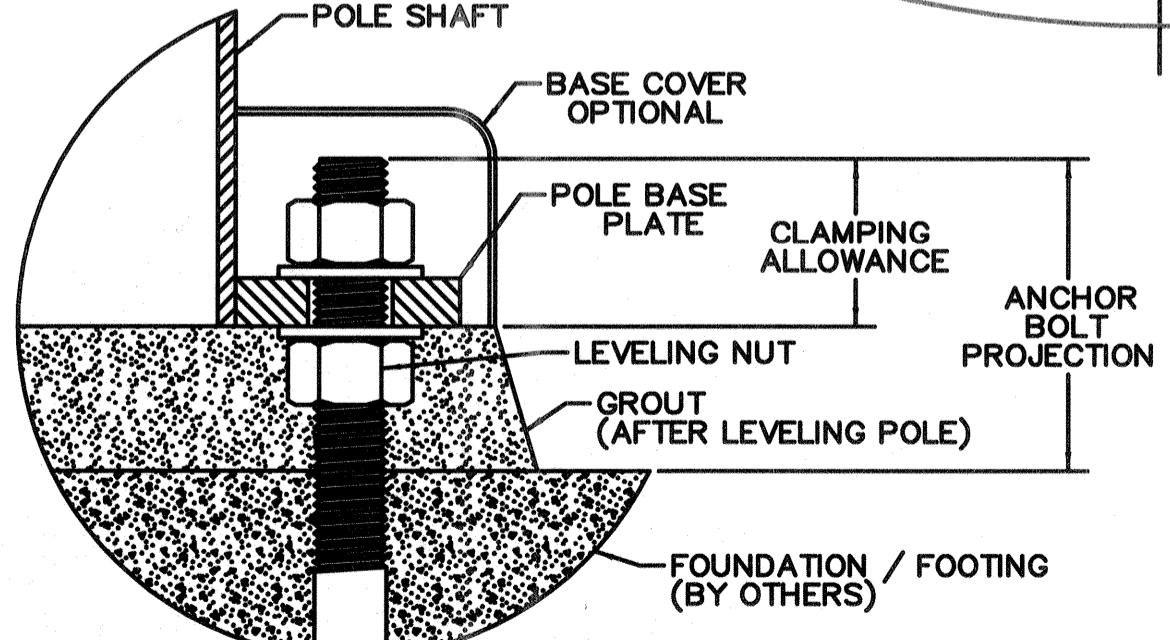
ANCHOR BOLT DIAMETER	RECOMMENDED TIGHTENING TORQUE (MINIMUM)
3/4"	135 FOOT LBS.
1"	270 FOOT LBS.

LUMINAIRE / POLE CONFIGURATIONS

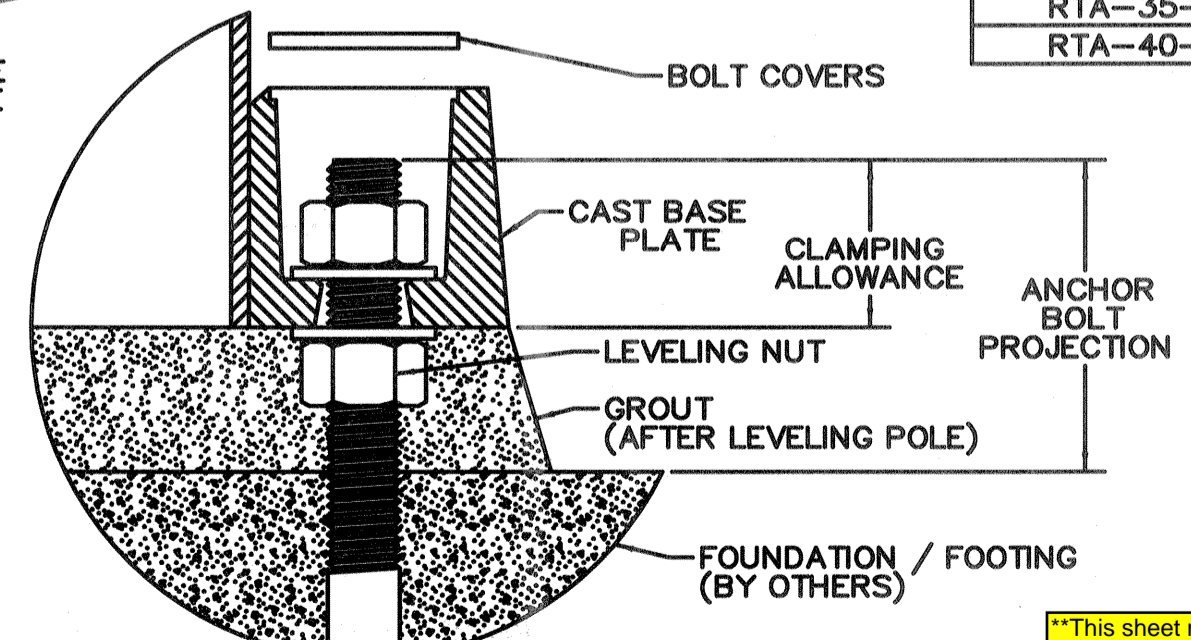
TOP VIEW  
H-H DESIGNATES HANDHOLE LOCATION



POLE DESCRIPTION	BOLT DIAMETER	CIRCLE (B.C.)	TEMPLATE COLOR	CLAMPING ALLOWANCE		ANCHOR BOLT PROJECTION
				MIN.	MAX.	
<b>ROUND STRAIGHT ALUM.</b>						
RSA-XX-40	3/4"	6-3/4"	BROWN	1-1/4"	1-5/8"	3"
RSA-XX-45	3/4"	7-3/4"	GREEN	1-3/8"	1-5/8"	3"
RSA-XX-50	3/4"	7-3/4"	GREEN	1-1/4"	1-5/8"	3"
RSA-XX-60	3/4"	8-3/4"	RED	1-3/8"	1-5/8"	3"
<b>ROUND TAPERED STEEL</b>						
RTS-20-65	1"	9-1/2"	BLUE	2-1/8"	2-7/8"	4"
RTS-25-70	1"	10"	PURPLE	2-1/8"	2-7/8"	4"
RTS-30-80	1"	11"	AQUAMARINE	2-1/8"	2-7/8"	4"
RTS-35-80	1"	11-1/2"	GRAY	2-1/8"	2-7/8"	4"
RTS-39-90	1"	12-1/2"	ORANGE	2-1/8"	2-7/8"	4"
<b>ROUND TAPERED ALUM.</b>						
RTA-20-60	1"	9-1/2"	BLUE	1-7/8"	3-1/8"	4-1/2"
RTA-25-70	1"	11"	AQUAMARINE	1-7/8"	3-1/8"	4-1/2"
RTA-30-80	1"	11"	AQUAMARINE	1-7/8"	3-1/8"	4-1/2"
RTA-35-80	1"	11"	AQUAMARINE	1-7/8"	3-1/8"	4-1/2"
RTA-40-80	1"	11"	AQUAMARINE	1-7/8"	3-1/8"	4-1/2"

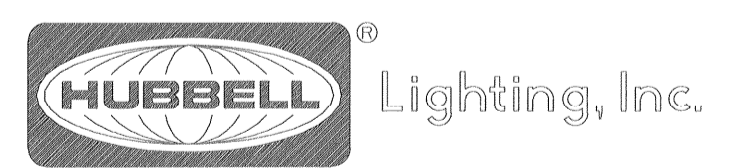


FLAT BASE PLATE DETAIL



CAST BASE PLATE DETAIL

**\*\*This sheet measures 22.5"x17.5" when at full scale. Please make sure sheet measures the dimensions listed above when printed or simply use the dimensions listed above for layout. \*\*O'Connor Sales Agency takes no responsibility for errors made in the field when this document is used.**



**SPAULDING LIGHTING, INC. WHITEWAY**

SHEET MEASURES 22 1/2" x 17 1/2"

SHEET 1 OF 2

DWG NO. **277-0134-9904** REV 3