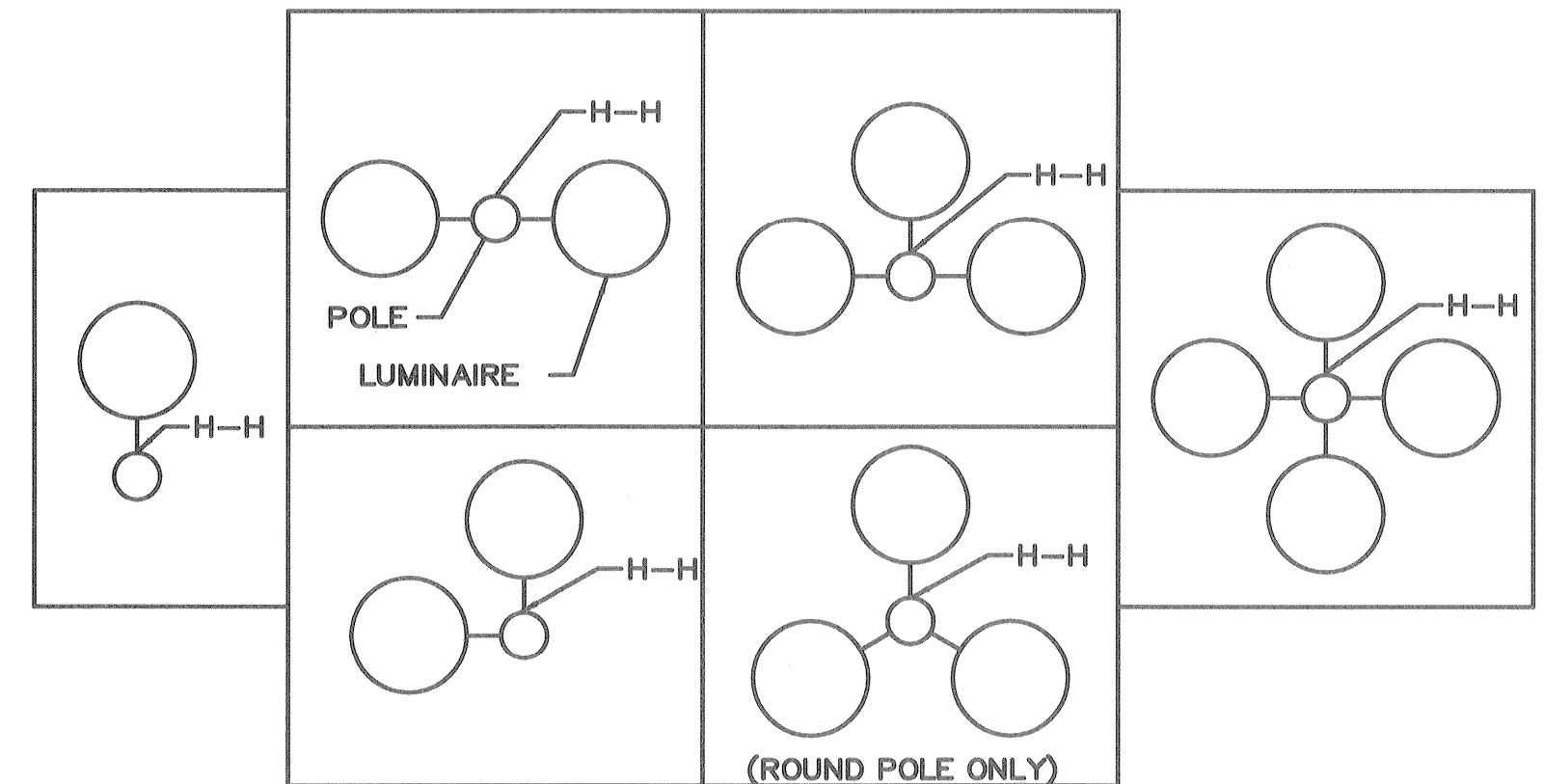
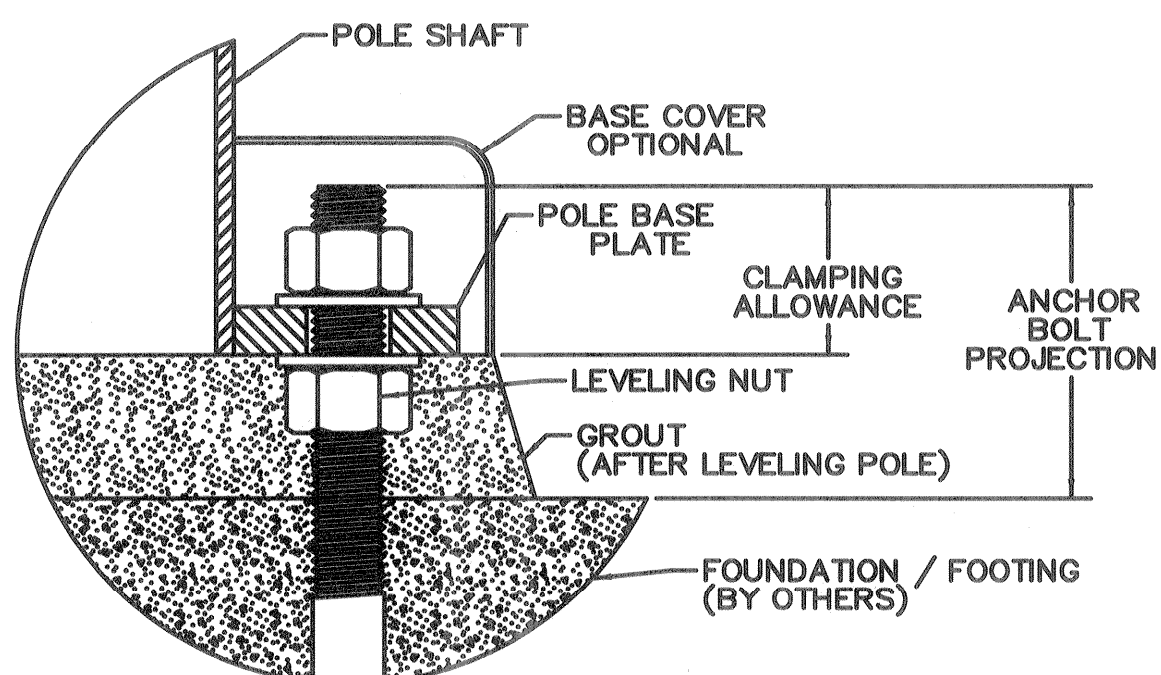


ANCHOR BOLT DIAMETER	RECOMMENDED TIGHTENING TORQUE (MINIMUM)
3/4"	135 FOOT LBS.
1"	270 FOOT LBS.
1 1/4"	326 FOOT LBS.

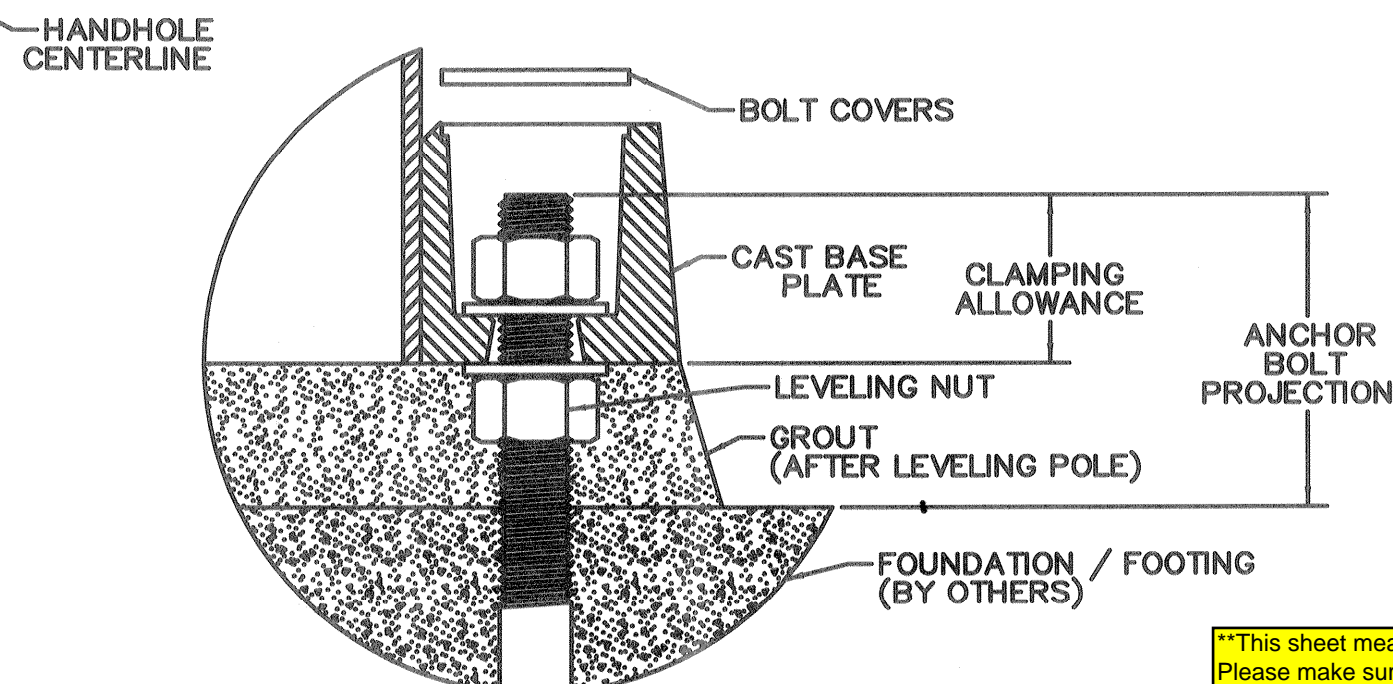
LUMINAIRE / POLE CONFIGURATIONS
TOP VIEW
H-H DESIGNATES HANDHOLE LOCATION



POLE DESCRIPTION	BOLT DIAMETER	BOLT CIRCLE (B.C.)	TEMPLATE COLOR	CLAMPING ALLOWANCE		PROJECTION
				MIN.	MAX.	
SQUARE STRAIGHT ALUM.						
SSA-XX-40	3/4"	8 1/2"	BLUE	1-1/4"	1-3/4"	3"
SSA-XX-50	3/4"	10 1/2"	PURPLE	1-3/8"	2-1/8"	3"
SSA-XX-60	1"	12"	GREEN	1-5/8"	2-3/8"	3 1/2"
SQUARE STRAIGHT STEEL						
SSS-XX-40 LESS THAN 25'	3/4"	11"	RED	1-5/8"	2-7/8"	4"
SSS-XX-40 25' OR TALLER	1"	11"	RED	1-7/8"	2-7/8"	4"
SSS-XX-50 LESS THAN 25'	3/4"	11"	RED	2"	3-1/8"	4"
SSS-XX-50 25' OR TALLER	1"	11"	RED	2-1/8"	2-7/8"	4"
SSS-XX-60-7	1"	12"	GREEN	2-1/8"	2-7/8"	4"
SSS-XX-60-3	1 1/4"	12"	GREEN	2-1/4"	2-3/4"	4"
SQUARE HINGED STEEL						
SHS-20-40	3/4"	11"	RED	1-5/8"	2-7/8"	4"
SHS-XX-50	1"	11"	RED	2-1/8"	2-7/8"	4"
SHS-XX-60	1"	12"	GREEN	2-1/8"	2-7/8"	4"
ROUND STRAIGHT STEEL						
RSS-XX-40	3/4"	8"	BROWN	1-5/8"	2-7/8"	4"
RSS-XX-45	3/4"	11"	RED	1-5/8"	2-7/8"	4"
RSS-XX-50	3/4"	11"	RED	1-7/8"	3-1/8"	4"
RSS-20-60	3/4"	11"	RED	1-7/8"	2-7/8"	4"
RSS-XX-60 25' & TALLER	1"	11"	RED	2-1/8"	2-7/8"	4"

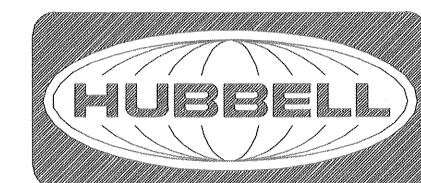


FLAT BASE PLATE DETAIL



CAST BASE PLATE DETAIL

****This sheet measures 22.5"x17.5" when at full scale. Please make sure sheet measures the dimensions listed above when printed or simply use the dimensions listed above for layout. ***O Connor Sales Agency takes no responsibility for errors made in the field when this document is used.**



Lighting, Inc.

SPAULDING LIGHTING, INC.
WHITWAY

SHEET MEASURES 22 1/2" x 17 1/2"

SHEET 2 OF 2

DWG NO.

277-0134-9904

REV

3